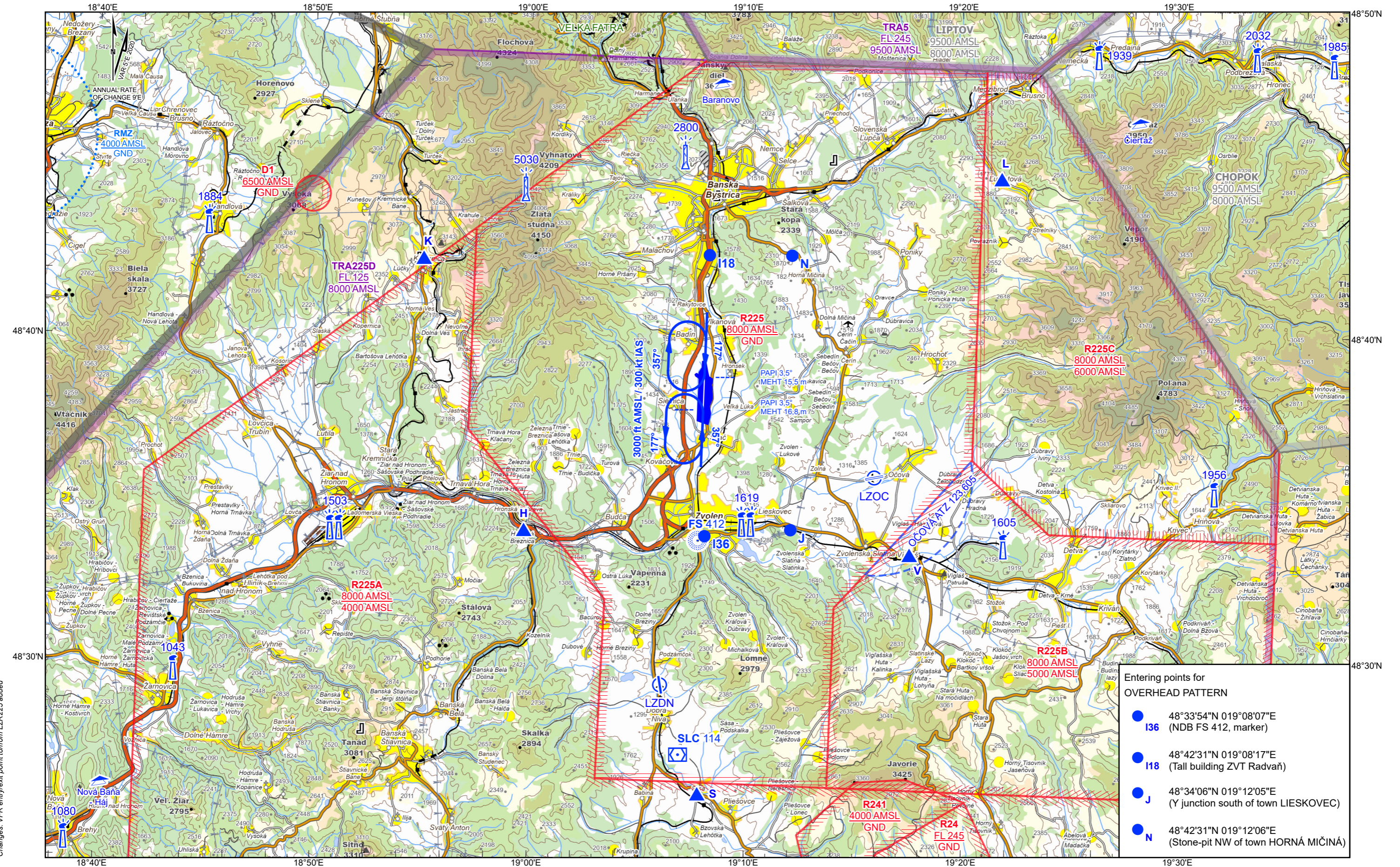


VISUAL APPROACH CHART - ICAO

ARP 48°38'17"N 019°08'03"E  
AD ELEV 1 044 ft

SLIAČ APPROACH/RADAR 119,155  
SLIAČ TOWER 122,905

SLIAČ (LZSL)



Changes: VFR entry/exit point to/from LZR225 added

BEARINGS: magnetic  
ALTITUDES & ELEVATIONS: ft  
CONTOUR VALUES & SPOT ELEVATIONS: ft

